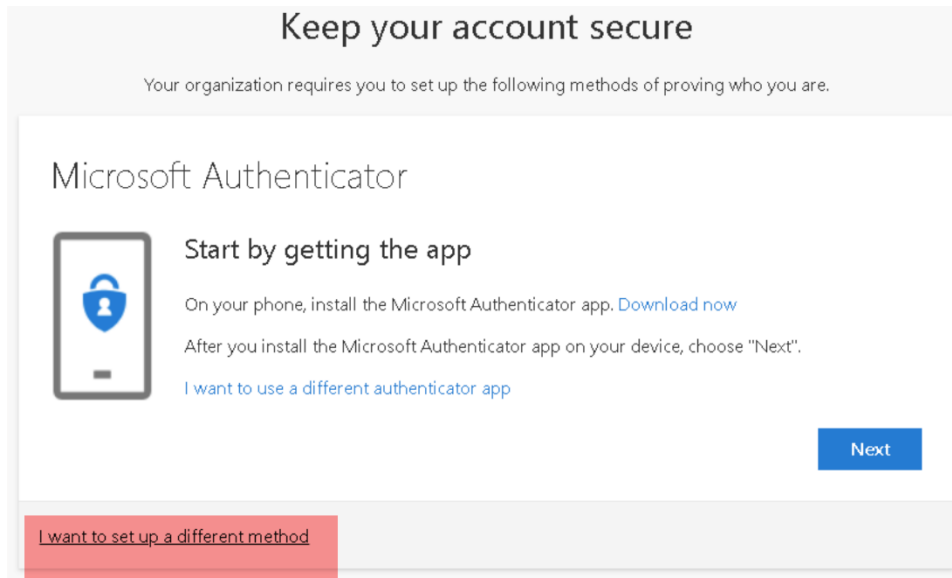


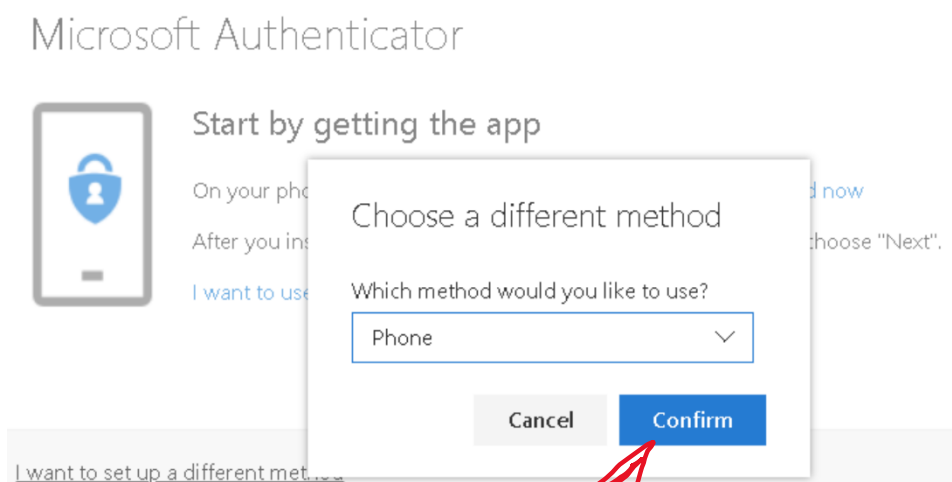
Setting up MFA for logging in to Office 365

The first time you login after being moved to the MFA group, you will see this screen when logging into Office 365

CLICK ON THE **"I WANT TO SET UP A DIFFERENT METHOD"**



Clicking on that selection will allow you to select the phone method listed below.



Once clicking on the confirm button, it will ask what number you want to use.

Enter the number you want to use.

Keep your account secure

Your organization requires you to set up the following methods of proving who you are.

Phone

You can prove who you are by answering a call on your phone or texting a code to your phone.

What phone number would you like to use?

United States (+1) 4438586500

Text me a code
 Call me

Message and data rates may apply. Choosing Next means that you agree to the [Terms of service](#) and [Privacy and cookies statement](#).

Next

Enter your number, choose Text me a code, and click Next.

You will receive a 6 digit number texted to the number you entered

Keep your account secure

Your organization requires you to set up the following methods of proving who you are.

Phone

We just sent a 6 digit code to +1 4438586500. Enter the code below.

276381|


[Resend code](#)

Back Next

Keep your account secure

Your organization requires you to set up the following methods of proving who you are.

Phone

 SMS verified. Your phone was registered successfully

Next

Keep your account secure

Your organization requires you to set up the following methods of proving who you are.

Success!

Great job! You have successfully set up your security info. Choose "Done" to continue signing in.

Default sign-in method: Phone - text 4438586500



Phone
+1 4438586500

Done